

SPLIT ROCK

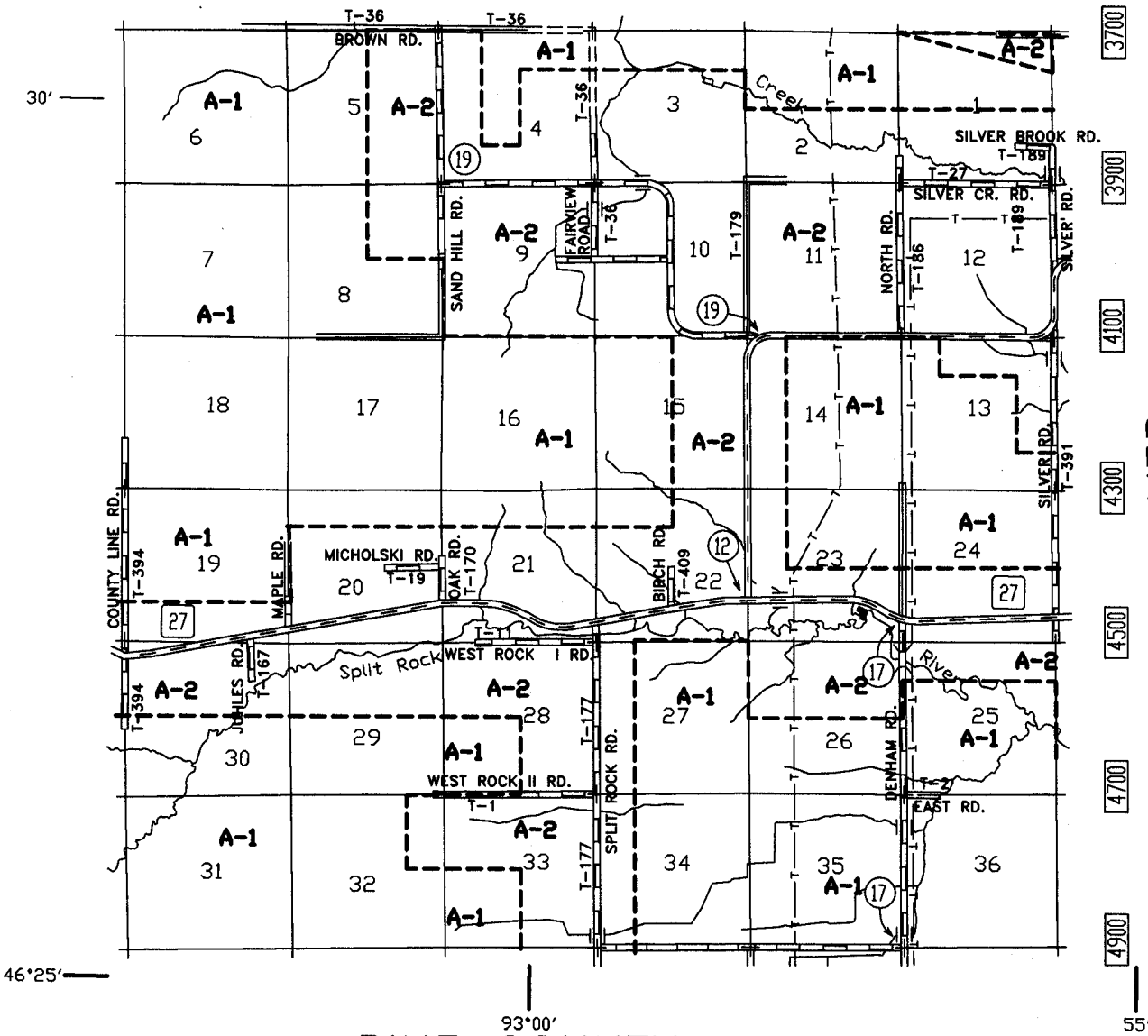
T. 46 N. - R. 21 W.

AUTOMBA

7300 7100 6900 6700 6500 6300 6100

AITKIN COUNTY

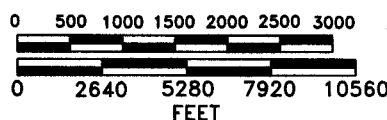
SILVER



LEGEND

- A-1 AGRICULTURE/FOREST MANAGEMENT
- A-2 AGRICULTURE/RURAL RESIDENTIAL
- C-1 COMMERCIAL RECREATION
- C-2 HIGHWAY COMMERCIAL
- M-1 LIMITED INDUSTRIAL
- R-1 RECREATION RESIDENTIAL

SCALE



LEGEND

- STATE HIGHWAY = 210
- COUNTY STATE AID HIGHWAY = 7
- COUNTY HIGHWAY = 44
- TOWNSHIP ROADS = T-88
- UNORGANIZED TOWNSHIP ROADS = UT-88
- TELEPHONE LINES =
- NATURAL GAS LINES = NG
- TRANSMISSION LINES =
- FEDERAL AID PRIMARY = F.A.P.
- FEDERAL AID SECONDARY = F.A.S.